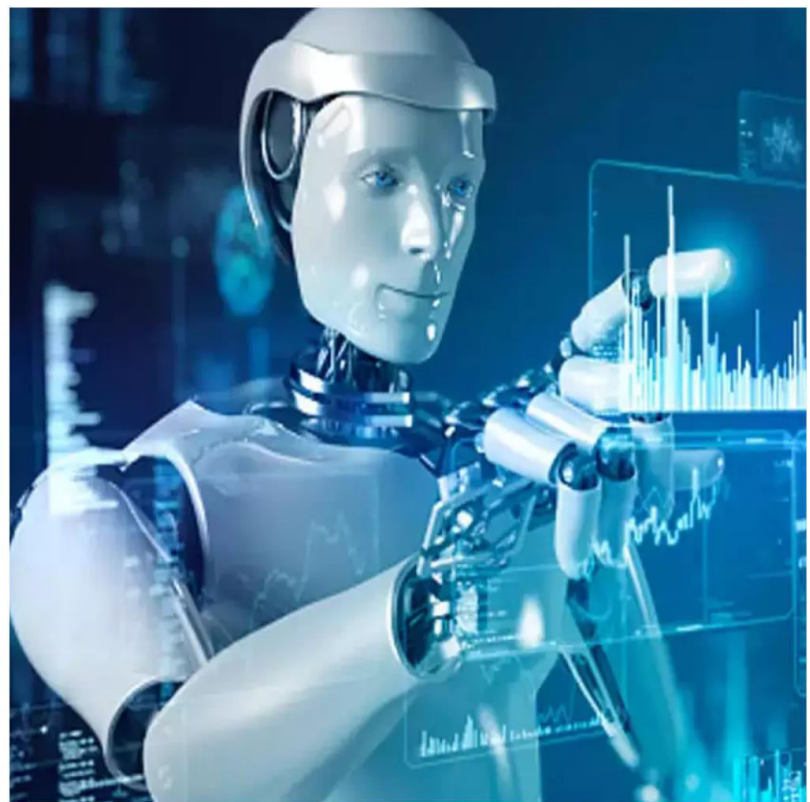




International Journal of Innovative Research in Science Engineering and Technology (IJIRSET)

(A Monthly, Peer Reviewed, Refereed, Scholarly Indexed, Open Access Journal)



Impact Factor: 8.524

Volume 14, Issue 1, January 2025

Advanced Data Fusion and Intelligent Modeling Techniques for Real-Time Highway Traffic Flow Analysis and Congestion Prediction

Rajeshwari S, Gagan T V, Lakshmeesh Gowda T

Assistant Professor, Department of Artificial Intelligence and Data Science Engineering, CIT, Gubbi, Tumkur,
Karnataka, India

U.G. Student, Department of Artificial Intelligence and Data Science Engineering, CIT, Gubbi, Tumkur,
Karnataka, India

U.G. Student, Department of Artificial Intelligence and Data Science Engineering, CIT, Gubbi, Tumkur,
Karnataka, India

ABSTRACT: The integration of real-time, multi-source data is increasingly crucial for the advancement of Intelligent Transportation Systems (ITS), bringing forward both research and application challenges. Data fusion (DF) has significantly contributed to the progress of ITS, particularly in areas like traffic flow analysis (TFA) and the forecasting of factors such as incident rates, driving behaviours, travel times, speed, and traffic density. This essay explores the applications of DF within ITS, covering aspects such as data sources for road management, traffic estimation, and controller optimization. It discusses methods of data, feature, and decision-level fusion in TFA, detailing essential DF construction steps, including preprocessing, filtering, and decision-making. Additionally, the paper reviews recent DF algorithms, evaluation techniques, and datasets, while also identifying existing research gaps and challenges in the field. A traffic flow state model using selective ensemble learning (SEL) is proposed, incorporating fuzzy C-means clustering and a Support vector machines in random subspace methods ensemble, which is optimized using Optimization using binary particle swarm techniques. This model achieves an accuracy of 98.68%, surpassing traditional methods. The paper also introduces a Greenshields-based system based on fuzzy logic developed for highway congestion prediction. This system, tested using data from Taiwan's Sun Yat-Sen Highway, aligns well with regression models and proves to be practically effective. The system's flexibility enables efficient traffic prediction without the requirement for a large amount of training data, thereby enhancing traffic management capabilities within ITS.

KEYWORDS: data fusion, intelligence modeling, conjection prediction , real time traffic analysis

I. INTRODUCTION

The rapid progress of technology and the widespread availability of data have led to significant transformations across various sectors, making real-time decision-making systems increasingly vital. In the field of transportation, these technological advancements have had a considerable impact. Intelligent Transportation Systems (ITS) have become a promising approach for enhancing traffic management, safety, and operational efficiency. Incorporating advanced technologies such as electronics, communication, control, sensing, and data analysis, ITS can deliver real-time insights and solutions.

A critical component of ITS is Traffic Flow Analysis (TFA), which plays a key role in understanding and forecasting traffic conditions to optimize traffic management strategies. The integration of multiple data sources, including cameras, GPS, radar, and even social media, has improved the precision of real-time traffic monitoring and state estimation. Data fusion techniques are crucial in this context, as they combine information from various sensors and data providers to create a more accurate and comprehensive understanding of traffic conditions. Furthermore, the adoption of advanced methodologies, such as machine learning, deep learning, and ensemble learning, has substantially improved the accuracy and efficiency of traffic state identification and prediction. These advancements have led to more effective traffic management solutions. This paper reviews recent developments in traffic state identification

models, data fusion techniques, and predictive frameworks that utilize big data and artificial intelligence. The aim is to establish a foundation for future research and practical applications in the field of traffic management. sensors and data providers to create a more accurate and comprehensive understanding of traffic conditions. Furthermore, the adoption of advanced methodologies, such as machine learning, deep learning, and ensemble learning, has substantially improved the accuracy and efficiency of traffic state identification and prediction. These advancements have led to more effective traffic management solutions. This paper reviews recent developments in traffic state identification models, data fusion techniques, and predictive frameworks that utilize big data and artificial intelligence. The aim is to establish a foundation for future research and practical applications in the field of traffic management.

II. RELATED WORKS

Methodology

1.Data Clustering Using FCM Model

Objective: To categorize the original traffic parameter data into significant clusters that represent distinct traffic states, such as congested and uncongested.

Approach: The FCM clustering model is used for unsupervised clustering. It minimizes an objective function to partition data each data point has a membership value that indicates how much it belongs to each fuzzy cluster.

Mechanism: The model ensures that intra-cluster similarity is maximized, and inter-cluster dissimilarity is minimized. Membership functions quantify the fuzzy nature of traffic states and help handle the ambiguity associated with traffic conditions.

2. Ensemble Learning Using RS Method

Objective: To improve prediction accuracy and model stability by combining multiple classifiers. RS Method (Random Subspace):

Step 1: All features of the training dataset are considered, and random sampling is performed to create multiple feature subspaces.

Step 2: Separate classifiers are trained on these subspaces using a machine learning classification algorithm.

Step 3: To produce a more reliable prediction, aggregation techniques such as majority voting are employed to merge the output from various classifiers.

3. Predicting Traffic Flow with Fuzzy Logic

Objective: To manage the uncertainty and imprecision inherent in traffic information and improve decision-making processes.

Fuzzification: Convert crisp traffic inputs leveraging membership into fuzzy sets nfunctions such as trapezoidal or Gaussian. This step allows traffic parameters like speed or vehicle count to be represented in degrees of truth.

Fuzzy Inference: Apply fuzzy rules to analyse fuzzy input data and generate accurate predictions. The system outputs actionable results, considering all degrees of membership and linguistic variables.

Defuzzification: Transform the fuzzy outputs into precise numerical values for practical application.

4. Traffic Data Collection and Sensing Methods

Integration of Sensor Technologies: Employ a combination of traffic sensing technologies, such as GPS, loop sensors, radar, and microwave sensors, to collect comprehensive traffic data. These sensors are necessary for measuring speed, vehicle presence, and other traffic parameters.

Sensor Fusion: Integrate information from several sensors

to increase accuracy and reduce the uncertainty associated with single-sensor measurements. This multi-sensor approach supports various traffic management applications, such as lane management and intersection monitoring.

By combining FCM clustering, ensemble learning, and fuzzy logic methods, this methodology effectively addresses the challenges of traffic state identification and prediction, ensuring better accuracy and a sophisticated representation of traffic dynamics.

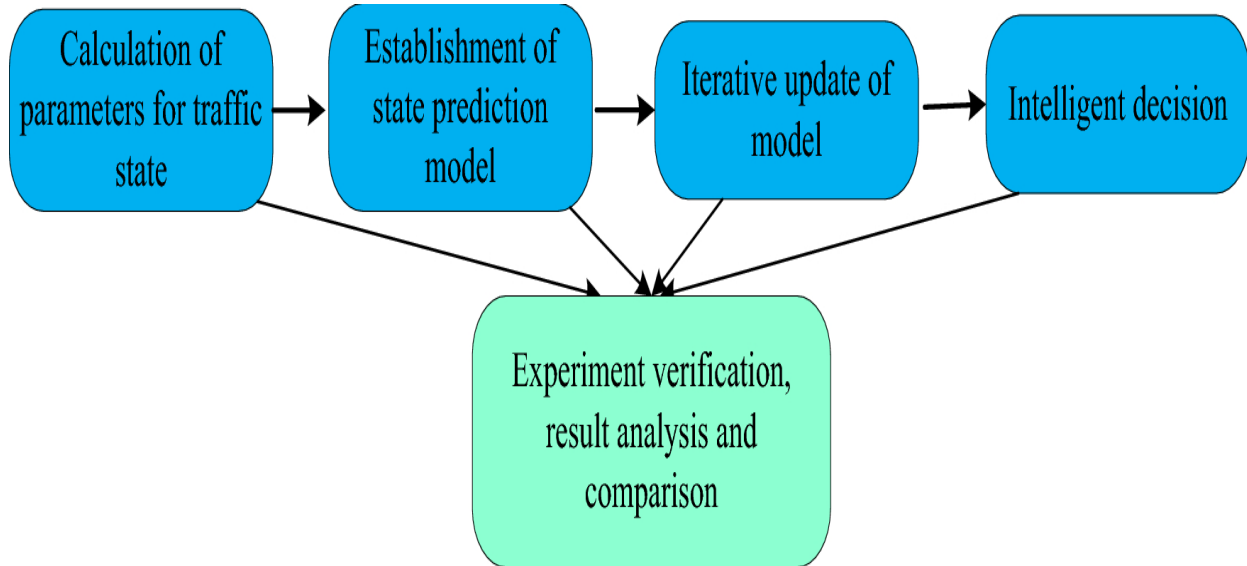


Fig 2.1: Proposed Model

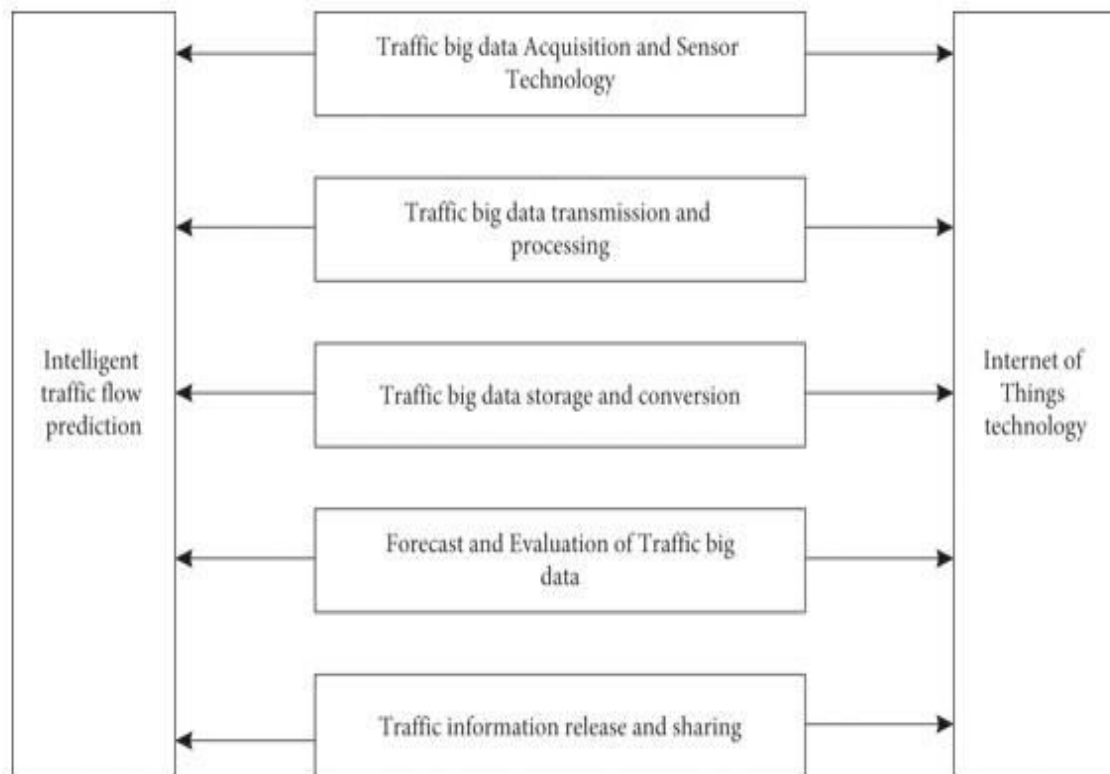


Fig 2.2: Traffic Flow Prediction

III. CHALLENGES AND LIMITATIONS

1. Data Quality and Uncertainty

Numerous diverse sources, including GPS, sensors, and cameras, frequently provide traffic data, which may be noisy, insufficient, or inconsistent. This creates ambiguity and compromises the accuracy of forecasts.

2. Real-Time Data Processing

Handling and processing massive amounts of traffic data in real time is computationally intensive. It requires robust infrastructure and efficient algorithms to ensure timely analysis, which can be challenging to implement effectively.

3. Sensor Integration Complexity

Due to variations in data formats, resolution, and coverage, integrating data from multiple sensors can be challenging. It takes sophisticated methods and system coordination to achieve smooth data fusion, which can be costly and technically challenging.

4. Scalability Issues

As the traffic network grows or data volume increases, models must scale efficiently. Some modeling techniques struggle to maintain performance at scale, impacting the effectiveness of traffic management systems.

5. Model Generalization

Intelligent models like neural networks or fuzzy systems might be optimized for specific traffic scenarios but may struggle to generalize well in all conditions. Adapting models to new traffic patterns without significant retraining remains a limitation.

6. Data Latency

There can be delays in data transmission and processing, causing latency issues. This affects the ability to provide accurate real-time predictions, leading to suboptimal traffic management.

7. Complexity of Traffic Dynamics

Highway traffic flow is inherently complex and influenced by various factors like weather, accidents, or roadwork. Modeling these interactions accurately is challenging, and simplifying assumptions may not capture the full complexity.

8. Privacy and Security Concerns

Collecting and processing traffic data, especially from connected vehicles and mobile devices, raises privacy and security issues. Ensuring data protection while enabling efficient analysis is a significant challenge.

9. Model Interpretability

More complex models, especially those that include machine learning, could not be interpretable. Trust and transparency in traffic management decisions may be hampered by the difficulty of comprehending and elucidating the reasoning behind some predictions.

10. Resource Constraints

Developing and deploying sophisticated data fusion and modeling systems require significant investment in terms of hardware, software, and human expertise. Limited resources can hinder the implementation of advanced solutions.

IV. CONCLUSION

To sum up, this study has introduced a novel hybrid supervised and unsupervised ensemble learning (SEL) system and an enhanced data fusion (DF) model for efficient traffic flow state identification and congestion prediction. The report offers a thorough overview of DF modelling methodologies, evaluation criteria, and their use in Intelligent Transportation Systems (ITS) investigations by examining and analysing 158 articles published between 2010 and 2020. The study underlines the unique functions of DF techniques at different fusion levels as well as the difficulties brought on by the intricacy of combining heterogeneous, multi-sensor, and real-time environments.

In order to improve accuracy over conventional clustering techniques, the proposed SEL model uses the FCM clustering method to divide traffic flow data into states. The system maximizes classifier selection and performance by utilizing the BPSO-RS-SVM ensemble technique.

REFERENCES

- [1] In 2004, Shafiza Ariffin Kashinath earned her Bachelor of Science degree in computer science. She is currently pursuing a MSC in information technology . she is a software developer at Sena Traffic Systems Sdn. Bhd., Malaysia. Her research interests include AI and traffic flow analysis.
- [2] Miin-Jong Hao, a Life Member of IEEE, completed his Bachelor's degree in Electrical And Electronic . He went on to earn his degree in electrical engineering from National University in and received his Ph.D. From 1987 to 1990, he was a Senior Engineer at the Data Communication Institute in Taipei. He is currently a Lecturer in the Department of Computer Science Engineering at National Kaohsiung University of Science and Technology in . His research focuses on wireless and multicarrier communication systems, as well as signal processing applications in tracking and estimation.
- [3] Xiaochao Wang is a Ph.D. candidate at the School of Transportation, Jilin University, in Changchun, China. Her research interests focus on intelligent transportation systems and the analysis of traffic big data.
- [4] David Lim serves as the Deputy General Manager of the Engineering Research and Development Department at Sena Traffic Systems Sdn. Bhd.



INTERNATIONAL
STANDARD
SERIAL
NUMBER
INDIA



INTERNATIONAL JOURNAL OF INNOVATIVE RESEARCH

IN SCIENCE | ENGINEERING | TECHNOLOGY

 9940 572 462  6381 907 438  ijirset@gmail.com



www.ijirset.com

Scan to save the contact details